

School Calendar

Tuesday 1 August

U15 Boys Basketball - Gloucester

Wednesday 2 August

MidCoast Council School Leaders Challenge

Friday 4 August

Bulahdelah Gala Day

Wednesday 9 August

Life Education drug talks

Thursday 10 August

U13 & U15 Girls Rugby - Port Macquarie

Friday 11 August

HSC Music & Drama Night

Monday 14 - Friday 25 August

Y12 Trial HSC Examinations

Tuesday 15 August

Y9/10IST & Y11 SDD Microsoft Store excursion

Y8 into Y9 information night

Thursday 17 August

U15 netball - Gloucester

Tuesday 22 August

Y10 into Y11 information night

P&C

Our next P&C meeting will be:

Monday 21 August - 6.30pm - Room AG03

CANTEEN - Phone 65589963

Monday 31 July

Gai

Tuesday 1 August

Emma

Wednesday 2 August

Merrilyn

Thursday 3 August

Kelly

Friday 4 August

Gai

Monday 7 August

Leanne

Tuesday 8 August

Gai

Wednesday 9 August

Gai

Thursday 10 August

Kelly

Friday 11 August

Kelly

Follow us on facebook



RIPARIAN ZONE TREE PLANTING

Year 9 Marine is learning about managing river systems. Part of this unit involves students planting and looking after a range of native trees, shrubs and grasses within our fenced off riparian zone in the ag paddocks.

A big thank you to Rosemary Wall from Riverdene Nurseries at East Gresford for her support and sponsorship of our projects, particularly the riparian zone.

With National Tree Day on Sunday 30 July, as a school we participated by planting trees on Friday with students invited to plant during break times.



Care Achievement Respect Effort Responsibility

129 Ravenshaw Street, Gloucester NSW 2422 / P 02 6558 1605 / F 02 6558 1229
www.gloucester-h.schools.nsw.edu.au / gloucester-h.school@det.nsw.edu.au

PRINCIPAL'S REPORT

We have had a busy first two weeks this term.

Our Vocational Education and Training (VET) students are undertaking their mandatory work placement. Thank you to the many businesses and industries in Gloucester and surrounding areas that have offered to take our students and support them in completing this component of study. On Thursday some of our students in Year 10-12 were invited to attend 2023 Mid Coast Career Quip which showcased local career options across the Mid Coast. There were also exhibitions from tertiary education institutes, vocational training providers, armed forces and local businesses.



Thank you to parents who attended the parent teacher evening last Tuesday. This was a wonderful opportunity for parents/carers and teachers to meet, discuss the school half yearly report and share information to support student goals and outcomes. If you were unable to attend, and would like to discuss your child's report, please contact the school for an appointment with your child's teacher.

We had 24 students participate at Hunter Regional Athletics on Wednesday, we are still awaiting full results but I would like to congratulate everyone that competed and represented our school with pride.

This week we had school captain and senior student executive interviews. Many thanks to Donna Kemp who was the independent community representative on the panel. Students and staff will vote for the senior student representative on Monday after the students have delivered their speeches. We wish the candidates well during the election period.

Mrs Trudi Edman, Principal

HOT STUDY TIPS FOR YEAR 12

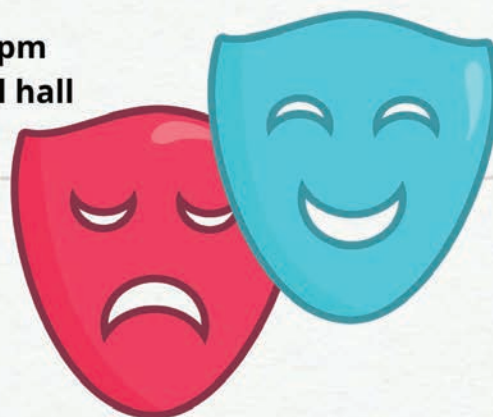
The Sydney Morning Herald Study Guide for 2023 is now available. Check it out for some helpful information for Year 12 students and parents.

<https://www.smh.com.au/national/nsw/hsc-study-guide-2023-20230524-p5daxg.html>

Senior MAD Night!

We invite you to come along for a showcase of
HSC Music and Drama performances

Friday 11 August @ 7pm
Gloucester High School hall



Please be advised, some performances may contain content for
mature audiences

THANK YOU, GLOUCESTER COMMUNITY SHOP

The Gloucester Community Shop has continued its very generous donations to programs running at Gloucester High School.

Over the past few years, the Community Shop, managed by Di Relf, has made multiple donations of \$500 to our school's Breakfast Club. This money has been used to buy food such as bread, cheese, ham, and fruit. Our Breakfast Club is available to all students and is always well attended. More recently we have started an attendance drive where students are eligible for a canteen voucher if they attend for

5 days straight, we call it '5 Dollars for 5 Days'. The Gloucester Community Shop has this time donated \$1,000 to support both whole school programs that are designed to engage and support our student's education and wellbeing.

We would like to publicly recognise the work of the Community Shop team. They run such a great organisation and support our community in so many ways.



Mr Mik Wisely Deputy Principal


UPCOMING SUBJECT INFORMATION EVENINGS

- put it in your calendar -

YEAR 10 PARENTS, CARERS & STUDENTS

ARE INVITED TO

YEAR 11 SUBJECT INFO EVENING!




Tuesday 22 August - 5.30pm
School Library
refreshments provided

YEAR 8 PARENTS, CARERS & STUDENTS

ARE INVITED TO

YEAR 9 SUBJECT INFO EVENING!



Tuesday 15 August - 5.30pm
School Library
refreshments provided

ANGLICAN CHURCH LUNCHEON

On Thursday 20 July our Year 11 Hospitality students enjoyed assisting with the catering for an Anglican Church luncheon, at the church hall. Prior to the day, the students prepared two tasty soups which provided the entrée component of the delicious three course meal, prepared by the Anglican Church Ladies Committee. The luncheon was hosted for members of the local community who have received, or are currently undergoing treatment for cancer. The Hospitality students utilised their abilities to adapt to a different working environment, just as they will when they complete the mandatory work placement. On arrival, the guests were offered a glass of punch and canapes. The students also assisted with the preparation, plating and serving of the main meals and the desserts. After the meals were served the students enjoyed mingling and chatting with the guests. While preparing food and washing dishes, we were lucky enough to enjoy the delightful performance from the Gloucester Public School Choir as they performed for the special guests.

Well done Year 11 Hospitality!

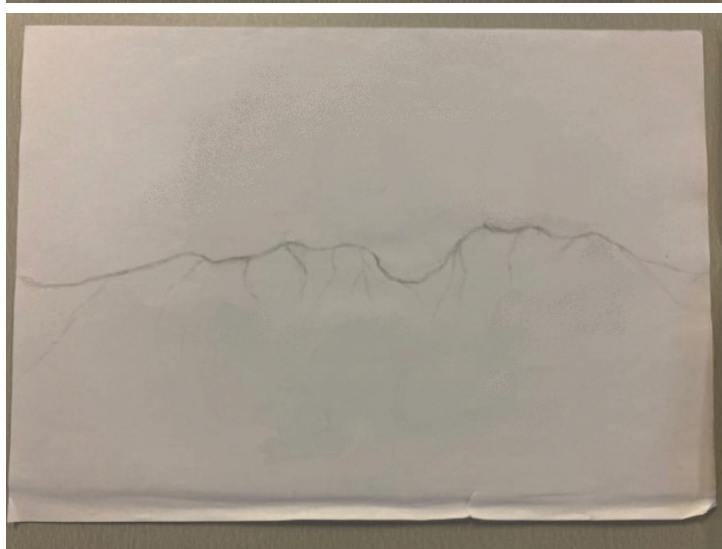
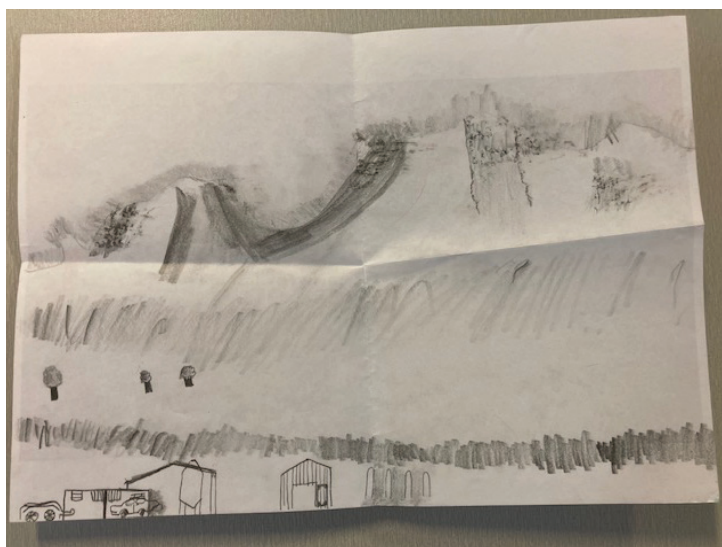
Mrs Louise Harris, Hospitality Teacher



FIELD SKETCHING

Year 7 have been field sketching the Buccan Buccan/ Bucketts mountain range in their Humanities class. How lucky are we to have such great views right from our school grounds!

Miss Layne Ross, Humanities Teacher



FROM THE ART ROOMS

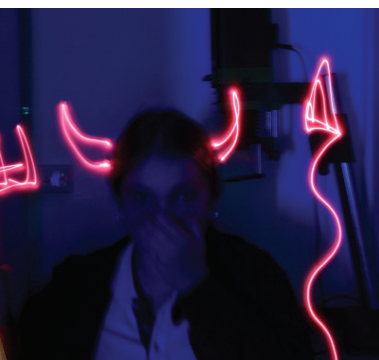
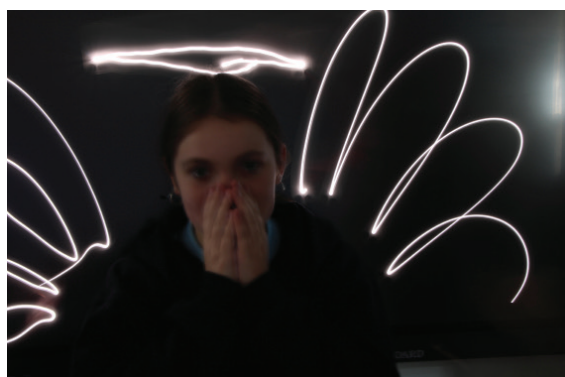
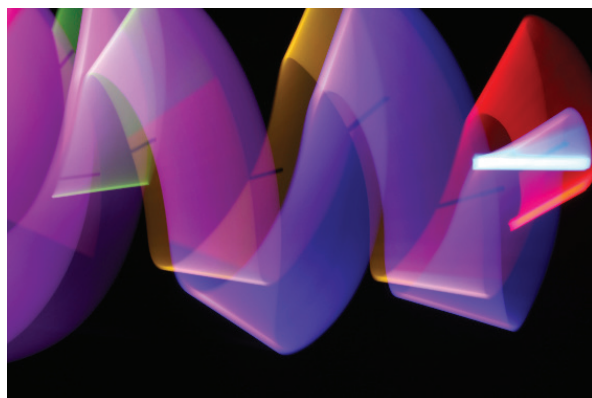
Photographic & Digital Media (PDM) - Light Paintings

Check out these fantastic photographs made by Year 9 PDM students late last term. The blurry effects were created by using very slow shutter speeds in a darkened room. During the exposure, which may have been 10 seconds or more, students used moving lights or other moving objects to create the blur.

Our hall has recently had new block-out blinds installed. This has provided a larger dark space for this activity. This week, students in our MC class have taken advantage of this to produce some spectacular work also.

Well done everyone!

Mrs Wendy Fraser, Art Teacher



NAIDOC SHIRT DESIGN WINNERS

At the 2023 NAIDOC Family Fun Day, Charlie Clarke was announced as the winner of Bucketts Way Neighbourhood Group's (BWNG) Shirt Design Competition. Her artwork represents 'our landscape, wildlife, family and community coming together'. Well done Charlie!

Due to the quality of entries, BWNG also awarded three more of our students with \$50 gift cards. Well done Indiana Dodds, Hailee Labry and Sarah Galvin!



GLOUCESTER MOUNTAIN MAN TRI CHALLENGE

The Gloucester Mountain Man Tri Challenge is set to run again this year after a 3 year hiatus. We have been well represented in the past with students entering as teams & individuals. There are trophies and cash prizes specifically for local senior and junior entrants. See Mr Seale or Mrs Cameron for more info!

Students in training for the 2023 Tri Challenge



You are invited to learn with us about Generation Alpha



Great Lakes Tuncurry Campus (7-10) is hosting an evening with Mark McCrindle to learn about Generation Alpha and what this means for teachers, parents and community.

Please join us to gain insight into the world our children are developing in and how our generations can overcome the differences to nurture our children's strengths.

Mark McCrindle is a social researcher, demographer and principal of the advisory firm, McCrindle. He is a media commentator, trusted advisor to many of the nation's leading organisations, and the author of five books on social trends and generational change.

When: Tuesday 8 August 2023

Time: 6:00 pm start

Where: Great Lakes College Tuncurry Campus Multi-Purpose Hall (at the rear of the complex)

What: A 45-minute presentation and short Q&A session following. Light refreshments will be available on the evening.

Cost: Free

Who: All parents and community members are invited to attend the event

We look forward to welcoming you on Tuesday 8 August 2023.

Kind regards

Sally Chad

Principal

Great Lakes College Tuncurry Campus

5 ways to be an awesome listener

Active listening is a big part of maintaining good relationships. When someone wants to chat about something important, here are some easy steps to follow.

1

Let them talk

While it can be tempting, try not to cut someone off with a personal story (even if it's relevant). Let them finish what they want to say first, then help them work out how they feel about it.

2

Be non-judgemental

Active listening is about having an open mind. When someone comes to you with a problem, try looking at it from their perspective and suggest helpful options, rather than being judgmental or critical.

3

Agree to disagree

Even when they ask for your help or advice, remember that it's okay if they disagree with what you say or suggest. Just focus on helping them choose their own path forward.

4

Ask open questions

Instead of asking 'yes/no' questions, use open questions to help them take the discussion in the direction they want it to go. Try out: 'Can you tell me more about that?' or 'How does that make you feel?'

5

Show them you're listening

Ask questions about what they tell you, and recap what they've said in different words to see if you got it right. People will trust you more if they know you're really listening to them.

Life doesn't always go as planned.

That's why there's ReachOut – a safe online place to chat anonymously, get support and feel better.

Learn more at ReachOut.click/listening



NAPLAN 2023 results: Information for parents and carers

What's changing?

From 2023, proficiency standards replace the previous reporting of student NAPLAN results that used numerical bands and the national minimum standard.

What are proficiency standards?

Proficiency standards describe what students are expected to know and should be able to do in literacy and numeracy at the time of NAPLAN.

There is a proficiency standard for each test area within each year level.

Students' results are measured against 4 levels of proficiency:

- **Exceeding:** The student's result exceeded expectations at the time of testing.
- **Strong:** The student's result met challenging but reasonable expectations at the time of testing.
- **Developing:** The student's result indicated that they are working towards expectations at the time of testing.
- **Needs additional support:** The student's result indicated that they did not achieve the learning outcomes expected at the time of testing. They are likely to need additional support to progress satisfactorily.



Has there been a change in what NAPLAN assesses?

No, there has not been a change in what NAPLAN assesses. NAPLAN continues to measure student achievement in numeracy, reading, writing, spelling, grammar and punctuation.

Detailed information on the knowledge and skills being measured in each NAPLAN assessment is available at www.nap.edu.au

Your child's teacher can provide more information into how your child's NAPLAN result relates to their other school-based assessments and classroom learning, and any additional support your child might need.

Why has the reporting changed?

Proficiency standards provide clearer information about a student's NAPLAN achievement based on reasonable expectations of what students should be achieving at the time of testing.

The standards will allow you and your child's teachers to easily identify areas of strength, as well as any areas that may need more support.

How do I know if my child is meeting expectations?

A result in the *Exceeding* or *Strong* level means your child has met and/or exceeded expectations for their current stage of schooling.

A result in the *Developing* or *Needs additional support* level means your child has not yet demonstrated they are meeting expectations for their year level at the time of testing.

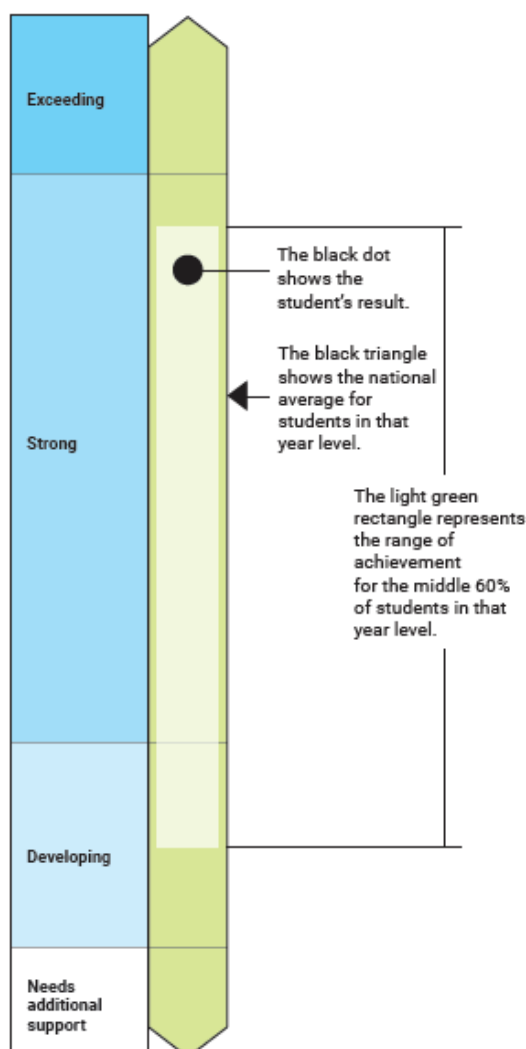
The results are simple to interpret and will allow you to easily identify areas where your child may require additional support.

How will proficiency standards appear on individual student reports (ISRs)?

The report shows 4 levels of proficiency - *Exceeding, Strong, Developing* and *Needs additional support*.

A student's result is shown as a black dot on an achievement scale for each assessment area, which shows increasing levels of knowledge, understanding and skills demonstrated in the assessments.

The new report continues to show each student's achievement against the national average (black triangle) and the range of achievement for the middle 60% of students in their year level (light green rectangle).



What skills are expected at each proficiency level?

Proficiency levels are set at a challenging but reasonable level expected for your child at the time of NAPLAN testing, based on what has been taught in previous years of schooling.

Page 4 of the ISR includes a summary of the skills expected at each level of proficiency.

Detailed proficiency level descriptions are available at www.nap.edu.au

Can I check my child's progress against previous NAPLAN reports?

Results from 2023 cannot be directly compared with results from 2008 to 2022 as:

- all schools now complete NAPLAN online
- the tests are held earlier in the year
- a new measurement scale that is more suited to the online tests has been introduced.

Questions?

If you have any further questions, please contact your child's teacher in the first instance.

Your child's teacher can provide insight into how your child's NAPLAN result relates to their other school-based assessments and classroom learning, and any additional support your child might require.

**NSW Education Standards Authority
NAPLAN team**

Phone: 1300 119 556 or (02) 9367 8382

Email: naplan.nsw@nesa.nsw.edu.au

NAPLAN 2023 individual student reports (ISR) and additional student reports (ASR) will be dispatched to schools from 20 July. Reports will be sent home with students late July.

INVITATION TO ATTEND CHARLES STURT UNIVERSITY PORT MACQUARIE OPEN DAY | 30 JULY 2023

Date: Sunday 30 July 2023

Time: 10:00am – 2:00pm

Location: Charles Sturt University Campus Green and 802 Buildings

Parking: Via Major Innes Road – [Carpark 3](#)



Open Day

Your story begins here!

© 2023 Charles Sturt University – TEQSA Provider Identification: PRV12018 (Australian University). CRICOS Provider: 00005F. M2021.

Book your spot

→ csu.edu.au/openday



Charles Sturt
University

Back to School Bus Safety

With the school holidays coming to an end and students heading back to school this week, motorists are asked to make safe driving their number-one priority.

Motorists

- School zones are now back in force. Reduced speed limits and additional demerit points apply.



- Sticking to the speed limit and following the road rules in school zones.
- You must also slow down to 40km/h when overtaking or passing a bus displaying flashing lights, unless a lower speed limit applies.
- Lights flash on buses to warn motorists that buses are picking up and dropping off children.
- Looking out for children crossing the road near bus stops, in school zones or along bus routes.
- Giving way to buses when they merge back into traffic.

STOP!

one step back from the kerb

LOOK!

continuously both ways

LISTEN!

for approaching traffic

THINK!

is it safe to cross the road?

Families

- Families have an important part to play in keeping children safe around roads.



- Never drop off or meet your child on the opposite side of the road to the bus stop or call them across the road.
- Always drop them off or meet them on the same side of the road as the bus stop.
- Remind your children to always wait until the bus has gone before choosing a safe place to cross the road.





TENNIS COACHING

Club Professional
Greg Billingham
(Tennis Australia affiliated)

Available for:

- Junior/ Adult Coaching
- Group & Private Lessons
- School Holiday Clinics

Enquire Now

To Enquire Contact:
Greg Billingham
Phone: **0414 552 966**
Gloucester Tennis Club



Gloucester Basketball is now taking names for all Competitions.
Please text Kate 0418263219 or email gloucesterbasketball2422@hotmail.com
or message us via our Facebook page Gloucester Basketball NSW Australia

Starts Monday 14/8/23
Tuesday 15/8/24
Thursday 17/8/23

Our competitions runs for 12 weeks plus 2 weeks of Finals. No games are played in school holidays or on public holidays

Mondays

Mini's (Kindy-Yr2)
330-4pm (includes training and games)

Div2 (mixed primary school Yr2-Yr5)
4pm
430pm
5pm

Div1 (mixed high school Y6-Y10)
530pm
6pm
630pm

Tuesdays

Junior girls (Y4-Y10)
5-6pm

Mixed seniors
6pm
640pm

Thursdays

Ladies
6pm
640pm

GLOUCESTER BASKETBALL

Rego for 12 month (2 seasons)

U8yrs \$30
8-11yrs \$60
12-17yrs \$70
18yrs +/seniors \$85

Game fees per season

Juniors \$6 per game or \$60 online for 12 week season
Seniors \$8 per game or \$80 online for 12 week season

Preferred payment is online and is to be paid in full by week 2

Gloucester District Athletics

will commence our 2023/2024 season on

Tuesday 1st August 2023 @ 3:45pm
at the Kay Green Memorial Oval



Fees for 2023-2024 season – Tots/U6 - \$60 U7-U17 - \$95 Plus weekly fees (\$2 per child)

Online Registration opens August 1st via www.lansw.com.au

Please text your child's name and date of birth to our registrar, Jess on 0408 584 244
or email gloucesterlittleathletics@gmail.com so we can update the age group events sheets.

Active Kids Vouchers can be redeemed during online registration - ensure you select the \$50 category if using active kids voucher (available to children 4.5 years to 18 years)

New to Little Athletics? Children can trial for 2 consecutive weeks before full registration is required.

Athletes born before 1st October 2007 can register through Athletics NSW - please contact club for more details

If you would like more information please phone Lyndell on 0428 587 585, email or send a message through our facebook page - Gloucester Little Athletics



Gloucester Landscape Felting

Artist Gemma Cross & Tops Landcare Group



When:

Saturday 12th August

Time:

10am - 12pm

Who:

Children aged 8+

Where:

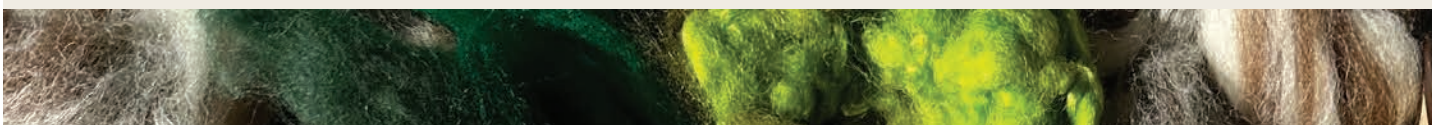
Gloucester CWA Hall

Cost:

**\$5 All money received
will be donated to
Landcare**

**Come along, learn about the importance of Biodiversity; then
discover the special properties of wool and create your own picture
of Barrington Tops or The Gloucester River through wet felting.**

**Limited spaces available, Bookings essential
Parents / guardians are welcome to stay**



This Inspiring Australia initiative is
supported by the Australian
Government as part of National Science
Week





AGED 17 OR UNDER? ENTER THE JUNIOR PHOTOGRAPHY COMPETITION NOW!



**2023 Pix Photography
Competition is open to all
young photographers.**

**Entries close on 30 July
www.gloucester-arts.com.au/pix**

SCHOOL VISION STATEMENT

Gloucester High School aims to develop a supportive learning environment that engages all students, teachers and community in the pursuit of excellence.



**Education &
Communities**

Principal
Deputy Principal
Address:
Telephone:
Email:
Web:

Mrs Trudi Edman
Mr Mik Wisely
129 Ravenshaw Street, Gloucester NSW 2422
6558 1605
gloucester-h.school@det.nsw.edu.au
www.gloucester-h.schools.nsw.edu.au