

School Calendar

Thursday 8 December

Multicultural day

Friday 9 December

Worlds Greatest Shave

Monday 12 December

Presentation Evening 7pm

Wednesday 14 December

Christmas Concert

Thursday 15 December

Peer-Support Training

Friday 16 December

Last day of Term 4

2023

Friday 27 & Monday 30 January

Staff Development Days

Tuesday 31 January

Years 7, 11 & 12 students return

Wednesday 1 February

Years 8, 9 & 10 students return

* All activities and events subject to COVID restrictions

CANTEEN - Phone 65589963

Monday 5 December

Vicki

Tuesday 6 December

Kelly

Wednesday 7 December

Merrilyn

Thursday 8 December

Emma

Friday 9 December

Emma

Monday 12 December

Gai

Tuesday 13 December

Kelly

Wednesday 14 December

Merrilyn

Thursday 15 December

Emma

Friday 16 December

Emma

CANTEEN VOLUNTEERS NEEDED

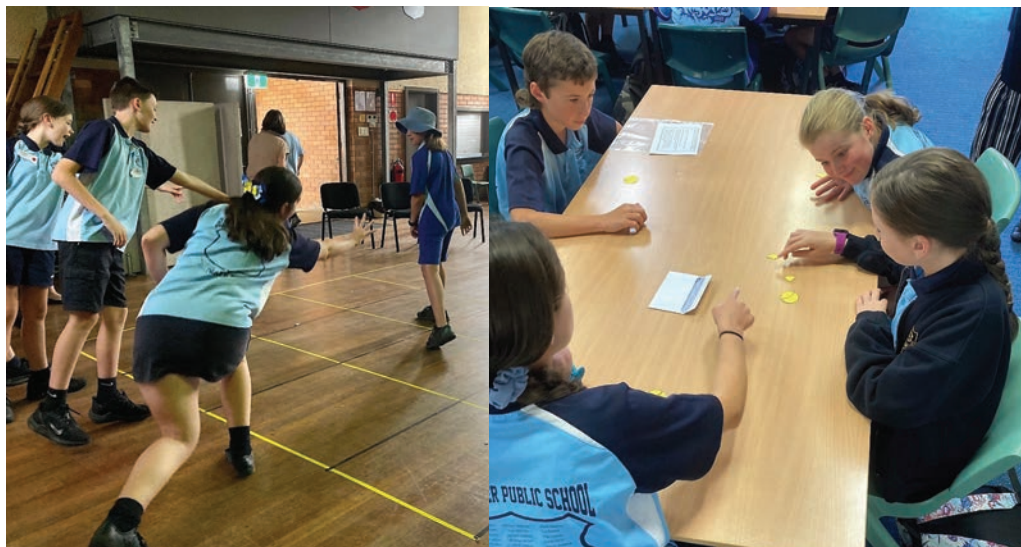
Once or twice a term, 10.30am-1.30pm
No experience required, just a friendly
face. Please contact us on 6558 9963.

Follow us on facebook



YEAR 6 ORIENTATION DAY

We had fun welcoming Year 6 into the school for Orientation Day on Wednesday!



Care Achievement Respect Effort Responsibility

129 Ravenshaw Street, Gloucester NSW 2422 / P 02 6558 1605 / F 02 6558 1229
www.gloucester-h.schools.nsw.edu.au / gloucester-h.school@det.nsw.edu.au

YEAR 6 ORIENTATION DAY continued...



MATHS CORNER QUESTION (for students and parents)

Question:

A radio at a shop has a price tag of \$100. The shopkeeper provides a discount to students sitting for a mathematics competition of 10% and, after deducting the discount, adds a goods and services tax of 10%. The price actually paid for the radio is

- A. \$90 B. \$99 C. \$100 D. \$101 E. \$110

Previous Answer:

The Australian tourist's money is worth $200 \times 0.55 = 2 \times 55 = 110$ US dollars. He should receive \$US10 in change, hence the answer is B.

* Maths corner questions have been provided courtesy of 'Australasian Problem Solving Mathematical Olympiads (APSMO) Inc' an advanced problem solving course currently being undertaken by some of our Year 7 & 8 students.

PRINCIPAL'S REPORT

As the school year draws to an end, I would like to highlight a few recent events that have occurred since our last newsletter and to inform you of some up-coming ones.

Thanks to Ms Layne Ross, our Year 7 Year Adviser for 2023, for the time and commitment she and her team have given in welcoming our primary school Year 6 students through the Transition to High School program. By all accounts the students have enjoyed the activities, mini classes, meeting up with the Peer Support leaders, catching up with some of their Year 6 Buddy Leaders from when they were in kindergarten and meeting staff within the school. We are looking forward to next year.



Under the guidance of Ms Renee Berger and the Senior Student Executive Team, the SRC held a very successful school social last week. It was attended by about 150 students who were welcomed by the SRC into the school bedecked with many decorations, a DJ, fun activities and prizes throughout the evening. Many students came dressed in a variety of costumes.

Thanks to Mr De Angelis for the planning and organisation with community businesses in providing our Year 9 students the opportunity to participate in the Try a Trade Day program. I would also like to thank our community partners for hosting and opening their facilities to our students in such a worthwhile and authentic post school readiness program.

Next week, beginning 5 December, the Learning and Support Team together with the Wellbeing Team will highlight to the student body, International Day of People with Disability. This is a United Nations observed day aimed at increasing awareness, understanding and acceptance of people with a disability. Students will participate in short activities during roll call each day to promote understanding and acceptance for all people.

On Thursday 8 December, Mr Sam Cornall and our Aboriginal Education Team will host a Multicultural Day for students. This day will include community members from a variety of nationalities and cultures who will cook with our students, enlighten us all with their stories and teach us games and crafts that they did as a child or young person. Thank you to Rotary who have agreed to assist us with the lunchtime barbecue.

On Friday 9 December, the SRC have planned a 'World's Greatest Shave' event. The SRC have actively sought sponsorship for the day and have encouraged student to participate in a shave or a 'dramatic' haircut. I would like to highlight the generosity of Nic Maslen (School Captain) who donated one of his steers to this charity. Nic raised over \$2,300 for this cause – an outstanding contribution.

Another school event will occur on 12 December for Year 7 students. They will be undertaking an archaeological dig in the school grounds with the Year 7 teachers. Thanks to Danica Enks for this initiative and planning in establishing this plot to enhance the delivery of history content to students.

On the evening of the 12 December is the end of year School Presentation Evening in the school hall.

During the last week of term students will either participate in or be part of the audience for the annual Christmas concert. Students will also receive their annual school report at the beginning of this week.

The final event for the year will be for teachers. They will attend staff professional learning on the 19 and 20 December. The days will include; planning for 2023 and programming and attending online information sessions related to the new curriculum that will be rolled out over the next few years.

Mrs Trudi Edman, Principal

INFORMATION FROM NESA

The following is an extract from NESA, providing information relating to post-school pathways which are now included in Stage 6 course overviews, including the link to the relevant page on the NESA website.

From 2023, additional information will be made available for students outlining the skills they gain from their Year 11 and 12 studies as new courses are released. This will help students understand how knowledge is applied in each course and provide them with a common language to talk about skills in job interviews and applications for further study.

This addresses the NSW Government's commitment in response to the NSW Curriculum Review to "strengthen post-school pathways in the senior secondary school" by providing students with a stronger understanding of pathways into future study, training and employment.

The industry information is available in each course description on the <https://educationstandards.nsw.edu.au/wps/portal/nesa/home>

GET YOUR TICKETS!

P&C Christmas Raffle

PRIZES:

1ST \$100.00 WOOLIES FUEL GIFT CARD
2ND \$50.00 IGA GIFT CARD
3RD \$50.00 IGA GIFT CARD

TICKETS \$1 EACH
AVAILABLE AT THE
SCHOOL OFFICE AND
CANTEEN

DRAWN AT PRESENTATION NIGHT
12 DECEMBER 2022

WORLDS GREATEST SHAVE

We'd like to give a huge shout out to our School Captain, Nic Maslen. Nic auctioned his Angus cross steer at the recent Gloucester Store Sale. It was bought by Sally and Jamie Andrews. Nic has donated the full proceeds of \$2,300 to our World's Greatest Shave fundraiser!

Nic and his fellow School Captain, Jorja Beard, plus 15 other students and staff will be shaving or cutting their hair on Friday 9 Dec. Click [here](#) to help support this great cause.





It's our mission to raise

\$5,000

WORLD'S GREATEST SHAVE

**Gloucester High
are
shaving**

The big day is on
9/12/2022



Sponsor us!
Scan the QR code with your phone. You'll land on our fundraising page to make a quick and easy donation!

Details of our mission

During week 9 Gloucester High School will be taking part in the Worlds Greatest Shave for blood cancer. Sign up and donate today!

 World's Greatest Shave

Leukaemia Foundation

SCHOOL SOCIAL 2022

The school social was a raving success in our school quad last week. Our DJ, Aaron McCann, generously donated his time to make the night one of the most fun-filled events of the year! Students excelled themselves, dressing in costumes of their favourite TV/Movie character. Big thanks to staff members and students who gave their time to assist in making this a memorable end to 2022.





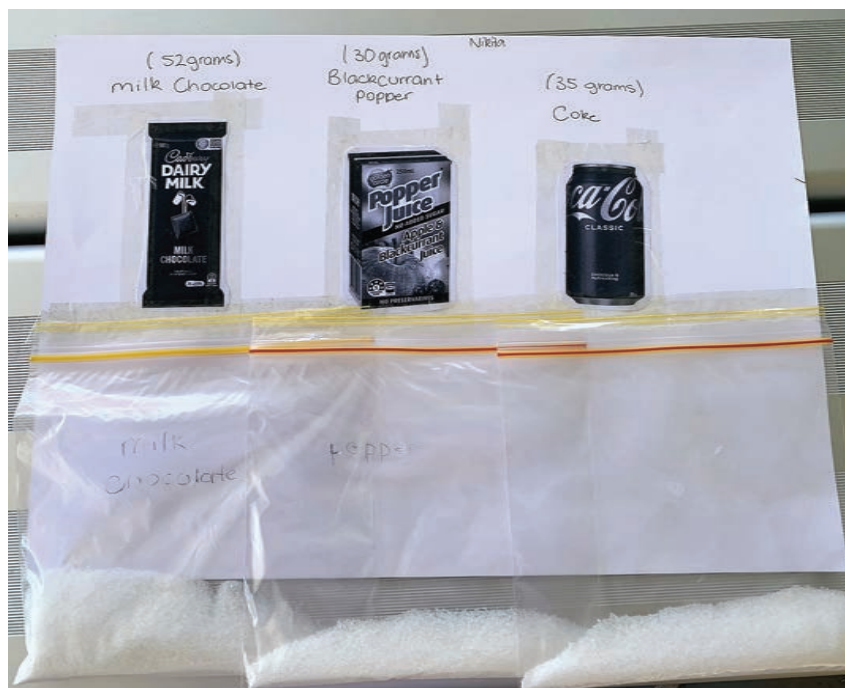
SCHOOL SOCIAL 2022



YEAR 8 SUGAR POSTERS

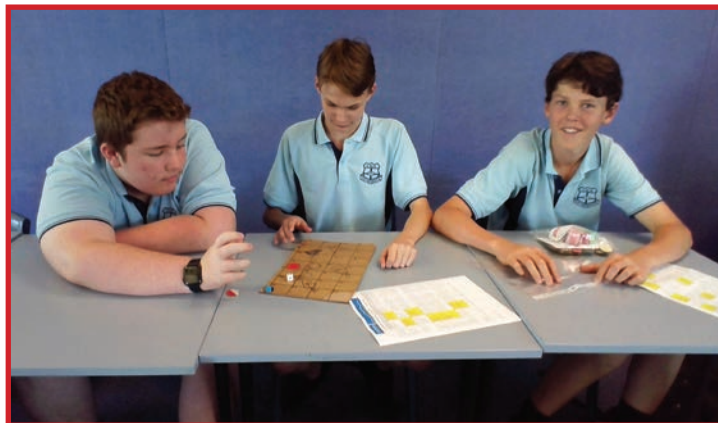
Do you know how much sugar is in common food items?

Year 8 PDHPE have been developing their health literacy skills to assess health products and information presented to them through the media. They have critically analysed health information from a variety of sources to expose myths and fallacies associated with health information. Students have learned how to read food labels on a variety of products, and they have assessed products based on the levels of fat, sugar, and salt present in each item. The pictures below demonstrate the amount of sugar present in a variety of food products that are commonly consumed by teenagers.



YEAR 7 PDHPE RISK BOARD GAME / CARD GAME TASK

Year 7 have been busy creating educational board or card games as part of their assessment in PDHPE. The games' purpose was to educate young people on making healthy lifestyle decisions. Students chose one of the following environments to base their board game/card game on: party safety, road safety, or outdoor safety. Students identified various risks, reasons why young people take risks, and ways to stay safe in their chosen environment. This task encouraged students to think critically about their chosen environment and they have produced some outstanding games. Now the fun begins!



IS YOUR CHILD READY FOR 2023?

All students will need to "Bring Their Own" device to school in 2023. If your child does not have a laptop that meets the minimum specifications, please look at the information available on our [website](#).

Please do not hesitate to contact the school if you have any questions regarding BYOD.



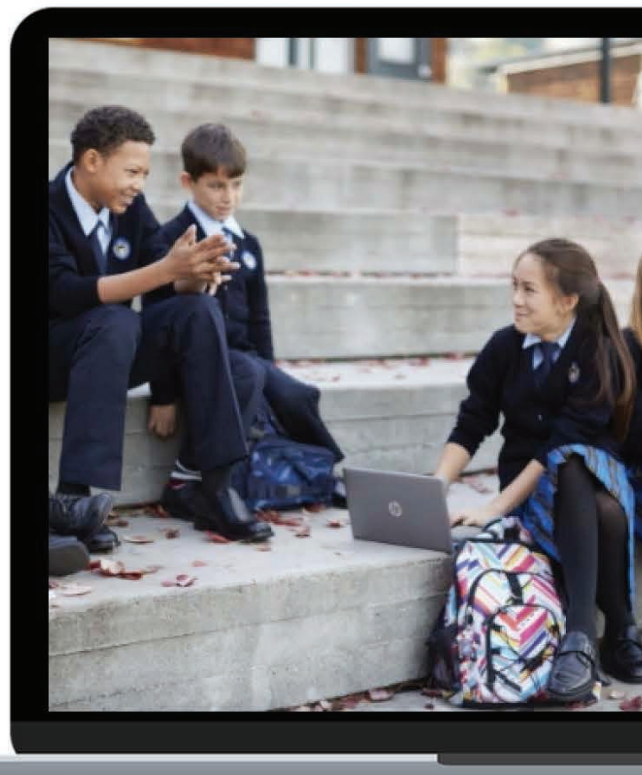


Gloucester High School



www.hp.com.au/byod

Access Code: GloucesterHS



Buying directly from HP ensures your child has the right device and support to work in the school environment. Importantly, it guarantees the latest learning devices at affordable pricing. All devices have been selected to meet the schools minimum device requirements.

How Do I Purchase?

The easiest way is to purchase online at www.hp.com.au/byod and use your school code. You can also purchase via the HP Call Centre 1300 725 017 (Mon - Fri 9am - 8pm AEST)

Payment Options?

Pay with Visa, Mastercard, American Express, PayPal, G Pay, Apple Pay

What is Accidental Damage Protection (ADP)?

ADP covers the device against accidental drops, spills or damage. Zero excess for three major claims over 3 years. E.g if a student were to drop their device and crack a screen we will come to site to repair at \$0 excess including parts and labour.

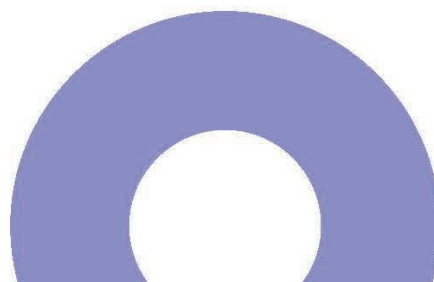
IMPORTANT UPDATE REGARDS THE SALE OF ADD-ON INSURANCES !!!

The Australian Securities and Investments Commission has introduced new regulations regarding the sale of add-on insurance products. These regulations now require a 4 day 'pause' between the purchase of a device and any add-on insurance associated with that device. We are still more than happy to assist you to purchase once that time has lapsed.

BE SURE TO CLICK YOUR INTEREST and we will contact you.



For any assistance please call
your friendly HP BYOD specialist
Katrina Parker 0438 898 814





Gloucester High School



www.hp.com.au/byod

Access Code: GloucesterHS

**RECOMMENDED BYOD
DEVICES FOR GHS, PURCHASE
& DELIVERY FROM TERM 4**



**3 YRS ACCIDENTAL DAMAGE
PROTECTION INSURANCE**

~~\$284~~ **\$97** Save \$187



For any assistance please call
your friendly HP BYOD specialist
Katrina Parker 0438 898 814



~~\$2,095~~
\$1,457
SAVE \$638

**BEST
SELLER**

**HP ProBook 435 x360 G9 13.3" AMD
Ryzen 5 + Pen + 3yr Onsite Support 16GB
RAM / 256 GB Storage**

**RECOMMENDED BY GHS FOR
BEST VALUE & SPECIFICATION**



~~\$1,858~~
\$1,287
SAVE \$571

**HP ProBook 435 x360 G9 13.3"
AMD Ryzen 3 + Pen + 3yr Onsite Support
8GB RAM / 256 GB Storage**



~~\$2,007~~
\$1,387
SAVE \$620

**HP ProBook 435 x360 G9 13.3"
AMD Ryzen 5 + Pen + 3yr Onsite Support
8GB RAM / 256 GB Storage**



~~\$2,539~~
\$1,787
SAVE \$752

**HP ProBook 435 x360 G9 13.3"
AMD Ryzen 7 + Pen + 3yr Onsite Support
16GB RAM / 512 GB Storage**

FENCING ISOLATED PADDOCK TREES

Taree TAFE recently delivered a fencing course down on the school flat. This training course was fee free and fully funded by the NSW Government, with Smart & Skilled Eligibility and was delivered by TAFE NSW. These courses are designed for small property owners or people who are new to the land that would like to improve their fencing skills.

It was a project jointly funded by Midcoast 2 Tops Landcare, Gloucester Environment group and was supported by Hunter Local Land Services.

While the school has embarked on creating a number of native plant habitats around the school, a small number of isolated paddock trees have been identified at risk due to the impact of stock.

Anyone interested in participating in courses for small landowners please contact daniel.trudgeon@lls.nsw.gov.au



Do you have any 1,000L containers?

We are after a couple of 1,000L containers to use to water our trees. If you have any available, please contact Mr Rob Seale via the school office.



Investigating Science Assessment Tasks -Science Trivia!!

The students in Investigating Science have designed and conducted the individual scientific investigation and written the formal scientific report for their assessment task. Thank you for supporting and participating in the investigation. The following experiments were conducted with small sample sizes and short time frames, therefore, some might lack accuracy and reliability.

Are fuse ratings accurate?

5 to 30 amps fuse were tested and their labelling was accurate as most of the fuse ratings displayed less than 7% error to the labelled value.

Nathan Woods

What type of paper makes the best paper airplane?

Printer paper, newspaper, baking paper and aluminium foil were tested. The printer paper had the furthest distance due to thrust and lift.

Jasmine Breakwell

Does sleep affect your immune system?

Survey was conducted and it showed that people who sleep less, especially less than 7 hours result in being sick more often compared to the people with average 8 hours or more sleep.

Alyssa Redman

Does the 5-second rule really work?

The slice of ham was left on the floor for 0, 5, 15 and 30 seconds and tested for the bacterial growth. The longer the slice of ham stays in contact with the floor, the more bacteria is present due to the longer exposure time.

Sarah Henderson

What natural antibiotics are the most effective when stopping the growth of bacteria?

Different natural antibiotics such as honey, tea tree oil, cinnamon and garlic were used to see if they can actually kill bacteria. The tea oil was the best to stop the bacterial growth as well as yeast.

Jessica Murray

Do Anti-bacterial wipes actually kill the bacteria?

The results showed that the amount of bacteria was successfully reduced by using anti-bacterial wipes. However, no anti-bacterial wipes killed 100% bacterial growth.

Natalie Rayner

What is the best temperature to grow mould on bread?

The bread was kept at 7, 22 and 27 °C in a similar environment. The mould at 22 °C (room temperature) grew more mould than the colder or hotter temperature.

Kate Bradbury

Does the age of plants reduce soil erosion?

The plants grew more roots as they aged. The plants that grew longer held most water, therefore, the amount of soil erosion could be lessened with more root in the soil.

Elise Coombes

Does colour affect people's food preferences?

The cupcakes with different colours of icing were left at the same condition. There was a trend in picking a certain type of colour when choosing a cupcake. People chose pink the most and yellow the least. Therefore, this experiment proved that the colour can affect food preferences.

Aston Wisely

Do reflex action change with age?

There was no significant difference between age groups. However, people's lifestyle such as playing games and sports showed better results in reflex action rather than just being younger.

Mereki Shore

What is the most common eye colour in GHS?

Survey was conducted and showed that the blue eye colour, which was 40% of the school, was the most common colour and brown (33%) was the second.

Marley Shore

How does ripeness of fruit affect the amount of DNA?

Unripened, ripened and over-ripened bananas were tested to see which can extract the most DNA. Over-ripened banana had the most amount of DNA extracted; however, it took the longest to get DNA out from the cells.

Byran Taylor

Which foundation is the best for dry skin?

Rimmel London match perfection, Maybelline New York matte and pore less foundation were tested for the amount of oil. Rimmel London match perfection had the most oil content and is great for dry skin.

Tiera-Jade Watt

Gloucester High School P&C Association



Position Vacant

SCHOOL CANTEEN ASSISTANT

2 days/7.5 hours per week – 10:45am to 2:30pm

This position is perfect for someone that prefers to work during school hours. The role does not require you to work in the school holidays

Essential Criteria:

- Support the Canteen Manager in the running of the canteen
- Exceptional customer service & interpersonal skills
- Excellent cash handling & time management skills
- Computer literacy skills
- Maintain safe food handling and food safety procedures
- Food Handlers Certificate, or willingness to obtain
- Working with Children Check (employee)
- Criminal History Check, or willingness to obtain
- Canteen or similar food preparation experience preferred

Applications close 8th December 2022

Enquiries and resumes to be sent to the Treasurer
via email at treasurer.ghspc@gmail.com

THUNDERBOLTS TENNIS ACADEMY (TTA)

Tennis Today, Tennis For Life HOLIDAY TENNIS COACHING CLINICS

TTA is a family orientated Tennis Coaching Business servicing the Gloucester District. We offer a range of programmes for all ages and playing standards and specialize in junior player development.

Head Coach at TTA Rusty Power has over 40 years tennis coaching experience, and is an **ATPCA** Advanced Pro (level 2) Qualified and Insured Coach.

Our Holiday Clinics are Exciting, Challenging & **FUN**.

New Years Clinic
Tues. 3rd to Fri. 6th Jan.

Back 2 School Clinic
Tues. 17th to Fri. 20th Jan.

Barrington Public School, Kenmore St, Barrington
5 to 11yr. (8am to 9.30am) & 12 to 17yr. (9.30am to 11am)

Cost: \$75/Clinic
Morning tea provided.

Please contact Rusty or Kimmy to confirm a position.
6558 7576 or thunderboltstennisacademy@outlook.com

TTA also offer; school term groups, special needs session, Private Lessons by appointment and **WILDCARDS** (2-5yr Program).

Taking EOI for Term 1, 2023 now.
Tennis Today, Tennis For Life

Gloucester Junior Rugby League

Expression of Interest for Players & Coaches 2023

Gloucester Junior Rugby League is currently seeking expressions of interest for players for its 2023 season. Please fill in the expression of interest form via the link ([Expression of Interest form link](#)) or email gloucesterjrl@gmail.com with your child's age as of 1/12/2023 and if your child played the 2022 season.

Expressions of interest are also being sought for Coaching positions for the 2023 season. For more information on applying please email gloucesterjrl@gmail.com or visit the Gloucester Junior Rugby League Facebook page.



STRATFORD COAL EDUCATION SUPPORT FUND



Education and Training Grants 2023

Applications are invited from interested persons and businesses for financial assistance grants for 2023 in the following categories:

Tertiary Assistance Grants – Up to \$3000 per grant.
For 2022 school leavers intending to enrol in university.

Tertiary Assistance Grants – Up to \$2000 per grant. For intending or currently enrolled university applicants who have not previously received a grant.

TAFE Course Benefits – Up to \$1000 per benefit.

School Based traineeships- Up to \$500 per benefit.

Apprenticeships/Traineeships Subsidies – Up to \$6000 over three years to assist local businesses to employ an apprentice or trainee.

Criteria

University and TAFE applicants need to have completed six years of their schooling at a Gloucester Basin School (Booral to Barrington). For the business subsidies, applicants need to be locally owned or operated businesses.

Note

All grants, benefits, scholarships and subsidies will be awarded on the basis of the quality of the written application.

APPLICATION FORMS AVAILABLE AT GLOUCESTER HIGH SCHOOL AND COUNCIL'S ADMINISTRATION CENTRE Gloucester & Stroud FROM THURSDAY 28/11/2022 or on the Stratford Coal website; www.stratfordcoal.com.au and follow the links to the Education Support Program

For further information contact: John Walton ☎(02) 6558 8272

Applications close on Monday 30th JANUARY 2023.

To appear in **Gloucester Advocate** from Wednesday 23rd November 2022 and every three weeks as space permits.

SCHOOL VISION STATEMENT

Gloucester High School aims to develop a supportive learning environment that engages all students, teachers and community in the pursuit of excellence.



Education &
Communities

Principal
Deputy Principal
Address:
Telephone:
Email:
Web:

Mrs Trudi Edman
Mr Mik Wisely
129 Ravenshaw Street, Gloucester NSW 2422
6558 1605
gloucester-h.school@det.nsw.edu.au
www.gloucester-h.schools.nsw.edu.au