

## School Calendar 2015

### TERM 4

**Monday 16 November**  
8 Ways Training

**Monday 16 November to Friday 20 November**  
Year 7 and 8 Yearly Examinations

**Tuesday 17 and Wednesday 18 November**  
Year 10 Peer Support Training

**Monday 23 November**  
Year 7 -2016 Orientation Day

**Wednesday 25 November to Monday 30 November**  
Multicultural Festival

**Wednesday 2 December**  
King Leayr Drama Excursion

**Thursday 3 to Saturday 5 December**  
Year 10 Drama Production -  
Hating Alison Ashley 2pm and 7pm

**Friday 4 December**  
Gloucester Horse Sports

**Monday 7 December**  
Presentation Night 7pm school hall

**Tuesday 8 December**  
Lions Club Youth of the Year presentation

**Sunday 13 December**  
P & C Christmas Meeting

**Wednesday 16 December**  
HSC results available  
Last day of school for 2015

**Thursday 17 and Friday 18 December**  
Staff Development Day

### CANTEEN

Phone 65589963

**Monday 16 November**  
Elona

**Tuesday 17 November**  
Nikkie Durbidge

**Wednesday 18 November**  
Sue Hoppe

**Thursday 19 November**  
no volunteer

**Friday 20 November**  
Elona

**Monday 23 November**  
Elona

**Tuesday 24 November**  
Sandy Gibbons

**Wednesday 25 November**  
Debbie Waller

**Thursday 26 November**  
No volunteer

**Friday 27 Novmeber**  
Elona



## GREAT TEACHING, INSPIRED LEARNING

On Tuesday, a busload of enthusiasm trundled down to Gosford High School. Messrs King, Frankcombe, De Angelis and Cavanagh, accompanied by 15 Year 9, 10 and 11 students, were off to check out the *Students as Learning Partners* program that has been running at Gosford High for a couple of years now. An integral part of their Student Voice thrust, *Students as Learning Partners* involves students trained in the art of observation, critically appraising the teaching and learning process. Students are required to provide constructive feedback to teachers about the lessons they have observed, leading to staff reflection, modifications to teaching and learning and, ultimately, to improved student outcomes. We were all thoroughly impressed with what we saw, and are champing at the bit to make it happen at Gloucester High. The students involved all showed great maturity and insight, and asked some great questions of the teacher they observed. A planning meeting will take place next week to get things rolling. It is anticipated that full roll-out will take place from the beginning of 2016. Indeed, this will be a fine example of Great Teaching, Inspired Learning.



Care Achievement Respect Effort Responsibility

## PRINCIPAL'S REPORT



By now, all parents should have received a letter outlining the school's pilot Using Personal Mobile Devices guidelines. Students have had the policy explained clearly to them and we are currently in the first week of its implementation. Please find a copy of the associated documentation which follows my report. In a nutshell, the trial arrangement allows for appropriate use of mobile devices (including mobile phones) before school, at recess and lunch and after school. In class, teachers can give permission for these devices to be used for educational purposes. It must be stressed that these devices must be off and away if a teacher does not want them used in their classes. Students have been advised of the types of behaviour that constitute "inappropriate use", and of the consequences of this. The pilot will conclude at the end of this term, with an evaluation process involving staff, students and parents. This process will determine whether the policy remains in place during 2016, or if changes need to be made. Student training in "device etiquette", safe device use and maximising the educational advantage of mobile devices will continue to be rolled out this year and into the future. I have high expectations and great confidence that students will embrace the change in policy and work with the school in ensuring all devices are used for appropriate purposes.

Please feel free to contact the school if you have any questions regarding this matter.

Cheers!

Pat Cavanagh

## A CHANGE TO OUR SCHOOL'S POLICY REGARDING THE USE OF PERSONAL MOBILE DEVICES, INCLUDING MOBILE PHONES

Over recent months, a number students and teachers have expressed a desire to be able to use the full range of personal mobile devices within the classroom as an educational tool. As a result of these requests, the school's Technology Team has undertaken a process of review, culminating in the implementation, on a trial basis for the remainder of this year, of the Using Personal Mobile Devices at Gloucester High School guidelines. A copy of these guidelines was given to all students at a special assembly on Friday 6 November. Students were also given a Personal Mobile Device Agreement which they have been requested to sign. At the assembly, each point within the guidelines was clearly explained and questions seeking clarification were answered. Students were also advised that they could speak with a member of the Technology Team if they had further questions.

As mentioned, this change is designed to allow all personal devices to be used as educational tools within classroom. It must be stressed, though, that the use of these devices is at the discretion of the teacher, and that disciplinary action as a response to inappropriate use remains an available option.

A process of evaluation will occur towards the end of the term, at which time a decision will be made as to whether or not these guidelines will remain in place into 2016.

Please take the time to discuss the guidelines with your child and feel free to contact the school on 65581605 if you have any question.

# USING PERSONAL MOBILE DEVICES AT GLOUCESTER HIGH SCHOOL

## Rationale

Mobile phones, iPods, iPads, tablets and other personal mobile devices are in common usage in our society and can be valuable tools to support learning. Educational applications including researching, recording and capturing video/audio, sharing and just-in-time learning.

This document comes into operation on a trial basis from Monday 9 November until 15 December 2015.

## Policy and Procedures

- Personal mobile devices are allowed to be brought to school, and can be used for educational purposes within the classroom under the expressed permission of the teacher.
- When not being used for educational purposes under the expressed permission of the teacher, they must be switched off and out of sight during lessons, sport, library, assemblies and other school activities. Students are not permitted to make or respond to personal calls or text messages while in class or between lessons.
- Before and after school, during recess and lunch personal mobile devices can be used in the playground for legitimate purposes. When being spoken to by a staff member in a face to face communication it is expected that earphones be removed from both ears as a courtesy to the speaker. If a staff member needs to speak with a student when a phone conversation is in progress in the playground, the student will excuse themselves from the call until the face to face communication is completed.
- Senior students are allowed to access personal mobile devices in the Study Centre, as long as they do not interfere with other students.
- Inappropriate use of personal mobile devices in the classroom or playground will result in disciplinary action.
- Schools will not accept any responsibility for theft, loss or damage to personal property. This includes, but is not limited to, personal mobile devices.
- Examples of inappropriate behaviour
- Harassment or invasion of individual privacy through the use of social media, text, taking pictures, video or audio recordings without permission.
- Being in possession of a device during exams or assessment tasks.
- Accessing, storing or transmitting offensive, embarrassing, pornographic or illegal content.
- Using the device in class time without the expressed permission of the teacher.
- Using the device in a way that disrupts the learning environment.
- Continuing to use a personal mobile device when a staff member wishes to speak with you.
- Using the personal mobile device to record fights, other criminal or anti-social activity.

## Disciplinary action for breaches of policy

- Students who have personal mobile devices out in class without the expressed permission of the teacher will be asked to turn it off and put it away. Teachers may institute loss of points for disobedience under the GHS Discipline system.
- For repeated breaches and/or instances of serious inappropriate use, teachers have the right to temporarily confiscate the phone and further discipline action will take place including, but not limited to, loss of discipline points, parental contact and restrictions on bringing personal mobile devices to school. Cases of serious inappropriate use may lead to suspension from school and/or police intervention.



## WHAT A FANTASTIC EXPERIENCE

ABOUT 2200 students from 39 schools have come together at Tamworth Regional Entertainment and Conference Centre (TRECC) for CAPERS 2015. What a fantastic experience to have attended this amazing show. Last Saturday I had the privilege of travelling to Tamworth to attend a performance of Capers 2015 the bi-annual spectacular from the western region of the Performing Arts Unit. A huge congratulations to Hanu Barff and Grace Forrester for their outstanding performances as featured artists in this show, also to Mauatua Barff for her participation in the choir. It was an amazing show with a huge range of talented students on display. We should be very proud of our students who were exceptional in the job that they did for this event. Hanu and Grace displayed outstanding maturity and confidence. They can be sure that they will go far in this field. I would also like to thank the families for the support that they have given in preparing for this show, traveling many miles for rehearsals and performances. They have certainly done a great job. Once again Gloucester High students have demonstrated that they always "strive to excel" in anything that they do. It is a pleasure to teach such dedicated and talented students. Well done Hanu, Grace and Mauatu. You are a credit to your parents, your school and to yourselves.

Mrs Judy Ingram



## YEAR 10 PEER SUPPORT TRAINING

Year 10 will be undertaking Peer Support Training off site at the Baptist Hall on Tuesday 17 and Wednesday 18 November. Permission notes have been issued to students and are to be returned to the front office. Full school uniform is to be worn and students will need to bring a packed recess, lunch and water as students will not be permitted to go to the main street and purchase food. Please also pack a hat and sunscreen for outside activities. Ms Pickett and Mr Elliott will be speaking with Year 10 about the program next Monday after assembly.

## REMEMBRANCE DAY SERVICE

Wednesday 11 November, we paused to remember those who sacrificed their lives for us in the name of freedom and peace for all nations. Our school captains represented our school at our local Remembrance Day service at the Memorial Park (clock tower) to pay our respects for those fallen for us. Lest we forget.



## YEAR 12- 2015

A Year Adviser can be one of the hardest journeys, yet most rewarding experiences a teacher will be privileged to be a part of. During the past six years, Year 12 have farewelled many, welcomed new students and returning students and today, you are privileged to be able to share wonderful experiences and memories with your peers. In my opinion, attending Gloucester High is a special, unique and life changing experience. I hope that one day, if you have not already done so, you will realise how fortunate you have been to be a member of this special group at a very special school.

As Year Adviser, I will offer my last bits of advice to each of you.

*There is no script to follow in life and success in life is not always predictable. Know that life is not fair and you will likely fail often, but it is part of life. Be prepared to take some risks, and challenge yourselves because you believe in yourself and your vision and success will come. Travel the world while you are young, try new things and live the fullest life you can imagine. Make sure you get involved in activities you enjoy and find time to give something back to your community. Remember your family because they have supported and helped you through the tough times and the good times. And finally, live in today because you'll never be this age again.*



This has been a remarkable and at times, very challenging journey, and despite all the hardships and successes over the years, one I am truly thankful to have been a part of. May you all stay healthy and live long and wonderful lives. I wish you all the best wherever the future takes you. And one last request – make sure you stay in touch.

## You're Leaving School and so is your Laptop

Be prepared for the exciting opportunities ahead of you with your unlocked laptop.  
1st step is take a backup (copy) of your files on the laptop.  
Get a 'Transfer of Ownership Acknowledgement and Acceptance' form, fill it out  
and hand it in with your laptop to be unlocked.

**Starts NOW!**



- Allow you to manage your own laptop including installing software
- Provide you with unfiltered web access including access to Facebook and Twitter
- Give you access to your own copy of Microsoft Windows 7 Ultimate and Microsoft Office 2010

**NSW** Education & Communities

# Attention Year 12



## LLEYTON PERFORMS WELL FOR HUNTER

Lleyton Richards enjoyed a successful week representing the Hunter U/16 tennis side in Newcastle last week. The Hunter side finished 4th overall of 9 teams. Lleyton managed to win all his doubles matches except one and played some excellent tennis. Being only 12 years of age, Lleyton has a few years ahead of him representing the Hunter in this side.



## EARLY EXAMINATION DATES

Yearly examinations for Years 7 to Year 8 will take place next Monday 16 November 2015. All students have been issued with their examination timetables. The examination timetables are also on our school website.

<http://www.gloucester-h.schools.nsw.edu.au/years>

PLEASE NOTE: All students have been given notification of what to study for the exam and the exam requirements. Please check this with your children or don't hesitate to contact us on 65581605.

## PRESENTATION NIGHT

The assembly will take place in the school hall on Monday 7 December 2015. The assembly will commence at approximately 7:00pm and will conclude at approximately 9:30pm. We would ask you to be at the school hall at 6:50pm in order for you to be seated before the evening proceeds. If your child is receiving an award you will be notified by post in the coming weeks.

Recognising the positive contributions that students make is a vitally important way the school can promote excellence and encourage our school motto "Strive to Excel". We look forward to your attendance.

## QUAD BIKE TRAINING COURSE

Last Thursday 5 November, in raining conditions, some students from Year 10 and Year 11 Agriculture went to the show grounds to attend a quad bike training course. The day involved, emergency stops after taking a corner from high speeds in a straight line, driving on steep hills using active riding, weaving around cones forwards and in reverse and manoeuvring around objects going over objects like cattle grids on the quad safely. This required some skill as it was quite wet and raining. Instructor Laurie commented on how well the students participated and what a great group to teach they were

It was a great and educating day for all of us, learning a variety of different new skills and the application of safety to our



# YEAR 7 - 2016 ORIENTATION DAY MONDAY 23 NOVEMBER 2015

Along with the PtoH program currently running we invite all students enrolled to attend Gloucester High School in 2016, to our school on Monday 23 November for a formal orientation program. Parents are not required to attend this day. This day aims to further provide the Year 6 students with knowledge and confidence to ready them for the exciting year ahead. Year 6 will work directly with Year 10 Peer Support Leaders and teachers as well as participating in a variety of games and activities that will enable students to navigate the school and its systems. We look forward to an exciting day and encourage all students to attend. We ask that students make their own way to and from school. All students need to arrive by 9.00am and will stay until the end of the regular school day at 3.15pm.

Students need to:

- Bring recess and lunch or money to purchase food
- Wear their sport uniform and enclosed sport shoes
- Have a hat and sunscreen
- Bring a water bottle

## PROGRAM FOR THE DAY

9:00am	Students seated in hall Year Advisor's Welcome - Mr Davis Principal's Welcome – Mr Cavanagh
9:15	Meet Ms Ribbons – Head Teacher Wellbeing
9:20	Modelling of uniforms
9:25	Meet Mrs Ingram and Mr DeAngelis – Boys and Girls Advisors
9:30	Meet Mr Cameron - Sport Coordinator
9:30	Meet Mrs Moulds - the Front Office Manager/Technology Support Officer
9:35	Great Aussie Bush Camp Presentation
9:55am	Meet Mr King – Deputy Principal
10:10 am	Year 7 students to Junior Quad to meet peer support leaders Scavenger hunt/timetable practise
11:00 am -	Students have recess in the Year 7 quad
11:20 am	Students continue with peer support activities
12:30 pm	LUNCH - SRC sausage sizzle in Senior Quad
1: 40 pm	P to H Program Final Session
3:00 pm	Students reassemble in the hall Question time Organise where to catch buses
3:10 pm	Students dismissed – walk home or escorted to buses.

# ITINERARY MULTICULTURAL FESTIVAL 2015 (Subject to Change)

## Wednesday 25 November

11:38am	Miller students arrive at Gloucester Station – transported to school.
12:00pm	Meet with host students in Senior Quad.
12:30pm	Assembly – Introducing students (whole school).
12:50pm	Lunch time as normal.
1:35pm	Students (whole school) view Cast from the Storm in the Hall
3:15pm	School finishes. Travel home with host students.
7:00pm	Dinner with host families or out at Roundabout Inn

## Thursday 26 November

9:00am	Rollcall with host students
9:10am	Normal classes. Miller students to rehearse in hall
12:00pm	All students move to quad– canteen closed: Multicultural Food Fest, Music, Dancing...etc (whole school)
1:40pm	Soccer match (whole school)
2:25pm	Normal classes. Miller students to attend bush poetry readings
3:10pm	Meet up with host students in quad to travel home
7:00pm	Social– Theme TBA
10:00pm	Finish

## Friday 27 November

9:00am	Rollcall with host students
9:10am	Normal classes. Miller students to rehearse in hall
12:50pm	Lunch time as normal.
1:30pm	Students move to hall for Tree of Life
3:10pm	Meet up with host students in quad to travel home
6:30pm	Music and Drama night in school hall (Tree of Life + Cast From the Storm).
9:00pm	Finish

## Saturday 28 November

7:00am	Students meet at GHS & travel to Polblue (Barrington Tops)
8:30am	Pitch camp & morning tea
9:30am	Walk to Horse Swamp & Polblue Falls
11:30am	Lunch and paddle under falls
1:30pm	Walk back to Polblue
3:30pm	Non-camping students return to GHS
5:00pm	Meet up with host students to travel home

## Sunday 29 November

10:00am	Camping students leave Polblue for GHS
11:30am	Meet up with host students to travel home

## Monday 30 November

9:00am	Rollcall with host students
9:10am	Final assembly, 10th Anniversary Ceremony and farewell (whole school)
10:10am	Students board bus for transport to station – normal classes P2-6.
10:55am	Train departs



Treehouse Theatre & Gloucester High present

# Suitcase Stories

True life stories of the refugee journey



**Join us for a night of incredibly moving and powerful performances.**

**Also featuring performances from our talented GHS Music and Drama students**

**PLUS**

**A viewing of the acclaimed documentary  
CAST FROM THE STORM.**

**Gloucester High School Hall**

**Friday 27th November @ 7pm**

**Tickets \$4.00 available at the door**

## **WANTED**

We are planning to take the Miller Students camping at Polblue ( Barrington Tops) on the Saturday 28 November. If you have a tent or sleeping bag these students may borrow for the night please contact Mr Davis on 65581605.

## NEW BOOKS

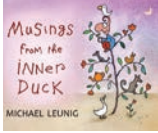


[Blurbs and cover images courtesy of Booktopia: <http://www.booktopia.com.au>]

### NON-FICTION

Musings from the Inner Duck by Michael Leunig

This collection of 138 cartoons tilts towards the whimsical, the wise and the sublimely misaligned. Mr Curly features often. There's the Global Positioning Sausage. The Effect of the Carbon Tax on Your Sausage. A Soliloquy for Strange Times. The Ordinary Oddness of Existence.



Dark Emu by Bruce Pascoe

Dark Emu puts forward an argument for a reconsideration of the hunter-gatherer tag for pre-colonial Aboriginal Australians. The evidence insists that Aboriginal people right across the continent were using domesticated plants, sowing, harvesting, irrigating and storing – behaviours inconsistent with the hunter-gatherer tag. Pascoe challenges the hunter-gatherer tag as a convenient lie.



A – Z of Convicts in Van Diemen's Land by Simon Barnard

This is a rich and compelling account of the lives of the men, women and children who were transported to Tasmania for crimes ranging from stealing bread to poisoning family members. Their sentences, punishments, achievements and suffering make for fascinating reading.



### NEW SERIES

DEPARTMENT 19 by Will Hill

Department 19 (#1): In a secret supernatural battle that's been raging for over a century, the stakes have just been raised. When Jamie Carpenter's mother is kidnapped by strange creatures, he finds himself dragged into Department 19, the government's most secret agency.



DEMON ROAD by Derek Landy

Demon Road (#1): Amber Lamont is a normal sixteen year old, but when a shocking encounter reveals a horrifying family secret, Amber is forced to go on the run. Killer cars, vampires, undead serial killers and red-skinned horned demons – Amber hurtles from one threat to the next...



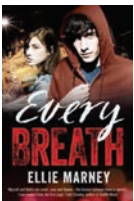
THE HIDDEN SERIES by Lian Tanner

Ice Breaker (#1): Petrel is an outcast on an ancient icebreaker that has been following the same course for three hundred years. Everyone has a tribe except Petrel, whose parents committed such a terrible crime that they were thrown overboard, and their daughter ostracised.



THE MAPMAKER CHRONICLES by A.L. Tait

Race to the End of the World (#1): The King is determined to create the first map of the world and has scoured the kingdom for boys who could become mapmakers. Quinn is shocked when he is selected as one of the three mapmakers competing for the big prize.



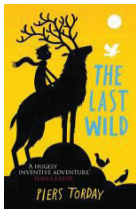
EVERY by Ellie Marney

Every Breath (#1): Rachel Watts has just moved to Melbourne from the country, but the city is the last place she wants to be. James Mycroft is her neighbour, a genius with a passion for forensics. Rachel finds herself unable to resist Mycroft when he wants her help investigating a murder.

THE GRIMSTONES by Asphyxia

The Grimstones Collection (#1-4): Four gothic fairy tales about a giant egg, a magical doll's house, a stubborn whirlwind, and a school of very great tradition.





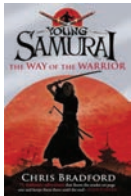
**THE LAST WILD** by Piers Torday

The Last Wild (#1): This is a story about a boy named Kester. He is extraordinary, but he doesn't know that yet. All he knows, at this very moment, is that there is a flock of excited pigeons in his bedroom who are talking to him. His life will never be quite the same again...



**MARK OF THE THIEF** by Jennifer A. Nielsen

Mark of the Thief (#1): When Nic, a slave in the mines outside of Rome, is forced to enter a sealed cavern containing the lost treasures of Julius Caesar, he finds much more than gold and gemstones -- an amulet that belonged to the great Caesar and is filled with a magic some Romans would kill for...



**THE YOUNG SAMURAI** by Chris Bradford

The Way of the Warrior (#1): Jack Fletcher is shipwrecked off the coast of Japan -- his father and the crew lie slaughtered by ninja pirates. Rescued by the legendary sword master Masamoto Takeshi, Jack's only hope is to become a samurai warrior. And so his training begins...



**PEGASUS** by Kate O'Hearn

Pegasus and the Flame (#1): When Pegasus, the majestic winged-stallion, crashes on to her roof in the middle of a storm that blacks-out New York City, 13-year-old Emily's life becomes that of legend: epic battles with gruesome monsters, desperate chases from a corrupt governmental agency, and one heroic quest to save Olympus before the Olympic flame burns out...



**SOUTHSIDE** by Jane Higgins

The Bridge (#1): Southside, the hostiles live in squalor and desperation. They're hungry to cross the river. Cityside, ISIS is in charge. Its job -- keep the hostiles at bay. ISIS recruits only the best for its elite command. Nik is smart. Very smart. So why does ISIS reject him? Before he can find out, his school is bombed...



**SIX OF CROWS** by Leigh Bardugo

Six of Crows (#1): Criminal prodigy Kaz Brekker has been offered wealth beyond his wildest dreams. But to claim it, he'll have to pull off a seemingly impossible heist. Kaz needs a crew desperate enough to take on this dangerous mission to get the job done -- and he knows exactly who: six of the deadliest outcasts the city has to offer.



**SUMMONER** by Taran Matharu

The Novice (#1): Fletcher was nothing more than a humble blacksmith's apprentice, when a chance encounter leads to the discovery that he has the ability to summon demons from another world. Chased from his village for a crime he did not commit, he must travel with his demon to the Vocans Academy, where the gifted are trained in the art of summoning.



**BLOOD OF GODS AND ROYALS** by Eleanor Herman

Legacy of Kings (#1): Imagine a time when the gods turn a blind eye to the agony of men, when the last of the hellions roam the plains and evil stirs beyond the edges of the map. A time when cities burn and, in their ashes, empires rise.



**RED RISING TRILOGY** by Pierce Brown

Red Rising (#1): The Earth is dying. Darrow is a Red, a miner in the interior of Mars. His mission is to extract enough precious elements to one day tame the surface of the planet and allow humans to live on it. One day Darrow discovers it's all a lie. Mars has been habitable -- and inhabited -- for generations, by a class of people calling themselves the Golds.



## YEAR 6 PtoH AFTERNOON



Wednesday 4 November 2015

## PLATYPUS FESTIVAL

Several SRC members volunteered to assist with the organisation of the Platypus Festival at Billabong Park which was on Saturday 7 November 2015.

The Platypus Festival is a fun, family friendly celebration of the platypus, which is found around these upper parts of the Manning River catchment that surrounds Gloucester. It's also the logo for Gloucester Tourism and this iconic Australian animal represents clean and healthy river systems.



SRC students Liam Chester, Jordan Dunn, Holly Haynes, Hayley Johns, Charli MacKintosh and Larah Niddrie generously gave up their weekend time to contribute to the 'living sustainably' theme by collecting and washing plastic plates that were used throughout the day.

Students were also able to enjoy the day's entertainment, which included acrobats and local singers. There was also lots of yummy food to enjoy.

It was a great day. Over \$60 was raised to help support the SRC. Much thanks to Mr and Mrs Culbert for their supervision on the day.

Charli MacKintosh

## SELECTIVE HIGH SCHOOL PLACEMENT APPLICATION 2017

Selective high schools cater for highly achieving academically gifted students who may otherwise be without classmates at their own academic and social level. These schools help gifted and talented students to learn by grouping them with other gifted and talented students, teaching them in specialised ways and providing educational materials at the appropriate level.

There are:

- Seventeen fully selective high schools
- Twenty-five partially selective high schools
- Four agricultural high schools, three of which have boarding places where students live at the school during the school term. Find out more about boarding at [www.schools.nsw.edu.au/learning/k-6assessments/shsplacement/ss\\_boarding.php](http://www.schools.nsw.edu.au/learning/k-6assessments/shsplacement/ss_boarding.php)
- One Year 7 selective stream in the Virtual Secondary School for students in country areas far from a city.
- Find out more about the virtual selective stream at [www.schools.nsw.edu.au/learning/k-6assessments/shsplacement/ss\\_virtual.php](http://www.schools.nsw.edu.au/learning/k-6assessments/shsplacement/ss_virtual.php)

A list of selective schools and their websites is available at the end of this document and on the internet at [www.schools.nsw.edu.au/shsplacement](http://www.schools.nsw.edu.au/shsplacement).



# CAREERS NEWS

## 2016 TAFE Students

Current Years 9 & 10 students who have submitted a TAFE Expression of Interest form to me will need to acquire a USI Number (Unique Student Identifier). I will need to record this number on the TAFE Application Form in the next couple of weeks. The USI Number will stay with you for life, and will maintain a record of all vocational education you complete. To create a USI go to: [www.usi.gov.au/](http://www.usi.gov.au/). You will need one of the following: Current driver's license, Medicare Card or a Birth Certificate (they work best in this order). I am happy to help students create a USI during lunch or recess in the Careers Office. Just come prepared with one of the above forms of ID. It should only take five minutes).

## YEAR 12 Graduates 2015

### University ATAR cut-offs - Bonus points and early entry

For some NSW schools, regional universities such as Newcastle, Charles Sturt, Southern Cross and New England all offer 'bonus ATAR' points to students based on where they attend school. These 'bonus points' are automatically calculated by the universities at the time of making offers. Sometimes this allows students to be made an offer into a course for which they did not quite achieve the published ATAR cut off rank.

In addition, some universities, including Newcastle, UNSW and Sydney offer 'bonus points' for students who achieved a certain mark or band (usually Band 5 or 6) in a particular HSC subject that is relevant to the degree at university they wish to study; for example, Band 6 in 2U Math's might earn additional 2 ATAR points at UNSW for a Science degree. Students MUST check individual university websites for this information. Some calculate this automatically, others may have an application process.

### UAC Preferences

Generally, students must place in rank order **up to 9 preferences** on the UAC application for universities in NSW / ACT. Separate additional applications can be made in each State in Australia. Preferences should be listed in order of what you most want to do. For example:

**1 Dream course** – what you would REALLY like to do even if you don't think you will get the ATAR

**2/3 Ideal course** – what you would be happy with if you did not get your 1st preference and might be able to use to transfer into preferred option the following year

**4/5/6 Realistic course** - what you would be willing to do if you did not get your higher preferences and might be able to use to transfer into a preferred option the following year

**7/8/9 Foot in the door course** – a 'lower ATAR' course you would do just to get into university. Do well and try to transfer into a preferred course the following year based on your academic record at university.

However, if you are applying for Early Entry as a BACKUP plan, one of these courses must be listed 1st to secure an early round offer in December. **The early round offer should be accepted** and then the order of preferences can be changed before the main round on January. **CHECK UAC BOOK FOR CUT OFF DATES.**

### Education Access Scheme - EAS

Each University has a scheme to give additional consideration to students who have suffered some sort of disadvantage during their HSC – disability, illness, death of immediate family member, homelessness, abuse, criminal proceedings etc. See your Careers Adviser in Term 3 for an EAS form or download one from the UAC website. It is important that you check such details with each university you apply for – they are all different and some have additional forms you need to complete.

### Aboriginal Students

Most universities have alternative selection criteria for Aboriginal students and athletes who have competed at a very high level. Students MUST consult with individual universities to access these programs.



### Tertiary Preparation Courses

Many Universities have tertiary preparation courses for students who do not meet the academic requirements to be offered a place in a course after the HSC. Eg: Newcastle – Newstep, Southern Cross – Preparing for Success, UNE - Pathways Enabling Program, UWS – UniTrack etc.

Alternatively, TAFE qualifications at a minimum Certificate IV level will be considered by most universities for entry. Diploma level courses may also attract significant RPL depending on the course / university applied for.

### Bridging Courses

These are available, usually in January at a cost, for students who need additional skills in subjects such as math's and sciences prior to entering a university course. See individual university entries in the UAC book for details.

### Education Degrees

A literacy and numeracy test based on the NSW curriculum will be implemented in all universities before students attend their final practice teaching placement. All current and commencing Education students across NSW must successfully pass this test in order to register with the Institute of Teachers. Another fundamental change is the achievement of a Band 5 in three Higher School Certificate (HSC) subjects, including English from 2015. For more information please visit the NSW Institute of Teachers website, or click here: <http://nswteachers.nsw.edu.au/future-returning-teachers/become-a-teacher/raising-university-entry-standards/>

### TAFE

Some TAFE courses require a State Wide Application. These are usually for high demand, competitive courses. Students MUST check the TAFENSW website to confirm the exact closing date and application requirements for the course you are applying for. Some will also require a portfolio, essay interview and/or test etc.

### TAFE (TVET) 2016 GHSD Enrolments

Current Year 9 and 10 students who have completed an Expression of Interest Form for studying a single course through TAFE next year, **MUST PROVIDE MR DE ANGELIS WITH A USI NUMBER ASAP**. If you have trouble acquiring your USI, simply go to the Careers Office during lunch or recess with a copy of your Driver's License or Medicare Card and you should obtain one in five minutes.

## THANK YOU MASTERS

Gloucester High School has received a kind donation of fifty hats from Masters Hardware.

The hats have been distributed to all students Year 8 to 12 enrolled in Agriculture. The hats were very popular and served to reinforce to the students the DET Sun Safe Policy. Many thanks to Masters for their donation.





# YEAR 8 VISUAL ARTS WORKS

Year 8 have been working on their Mixed Media work. It is currently on display in the Foyer.

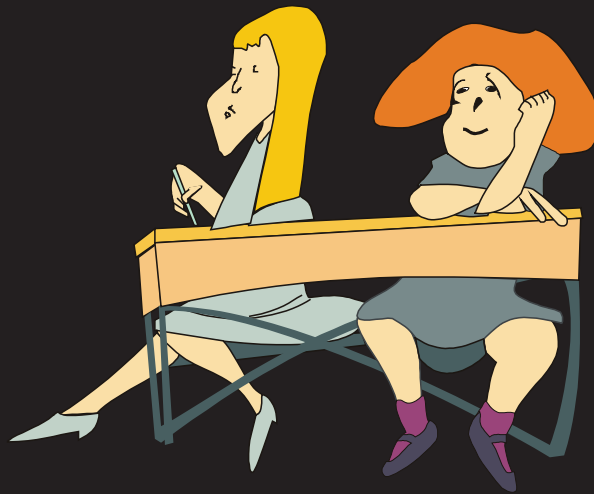


Gloucester High School Year 10 Drama presents

# HATING ALISON ASHLEY

BY ROBIN KLEIN

ADAPTED FOR THE STAGE BY RICHARD TULLOCH



GLOUCESTER HIGH SCHOOL HALL

Saturday December 5, 2015 at 2:00pm & 7:00pm

Starring Jacob Bird, Mia Bowden, Bailee Dillon, Amber Franks, Tiana Harford, Holly Haynes, Max Hoggett, Gabe Hennessey-O'Reilly, Jasmin L'Green, Claire Maslen, Stephanie Maurer, Emmeline Moulds, Ruby Pippen, Indira Virzi-Hartigan, and Abbie Windred.

Tickets: \$4:00 at the door

#### SCHOOL VISION STATEMENT

Gloucester High School aims to develop a supportive learning environment that engages all students, Teachers and community in the pursuit of excellence.



Education &  
Communities

Principal  
Deputy Principal  
Address:  
Telephone:  
Email:

Mr Pat Cavanagh  
Mr Mike King  
129 Ravenshaw Street, Gloucester NSW 2422  
6558 1605 Fax: 6558 1229  
gloucester-h.school@det.nsw.edu.au